



Technical Information

Chimney connection kit for flexible pipes (Packages DY888, DY895)

EN

Additional information to the technical instruction

JS

N° ITOE0241-en

14/01/2021

1. Purpose : mounting the finishing tube

Imperatively mount the finishing tube on the roof terminal (see details below).

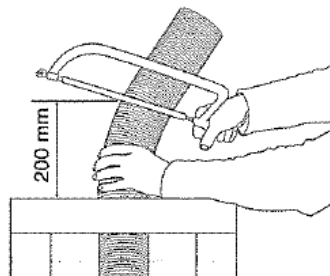
This tube is designed to be exposed to the weather and resistant to UV rays without deteriorating. This is not the case with flexible pipes, which could deteriorate if exposed to light and weather.



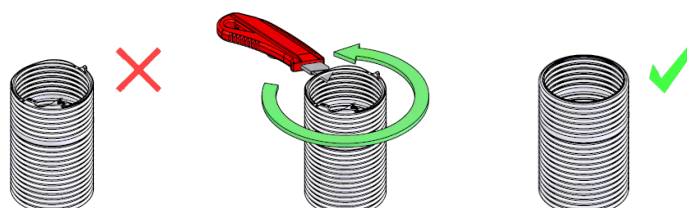
2. Mount the finishing tube

A. At the top of the chimney: allow **200 mm** of the flexible pipe to protrude.

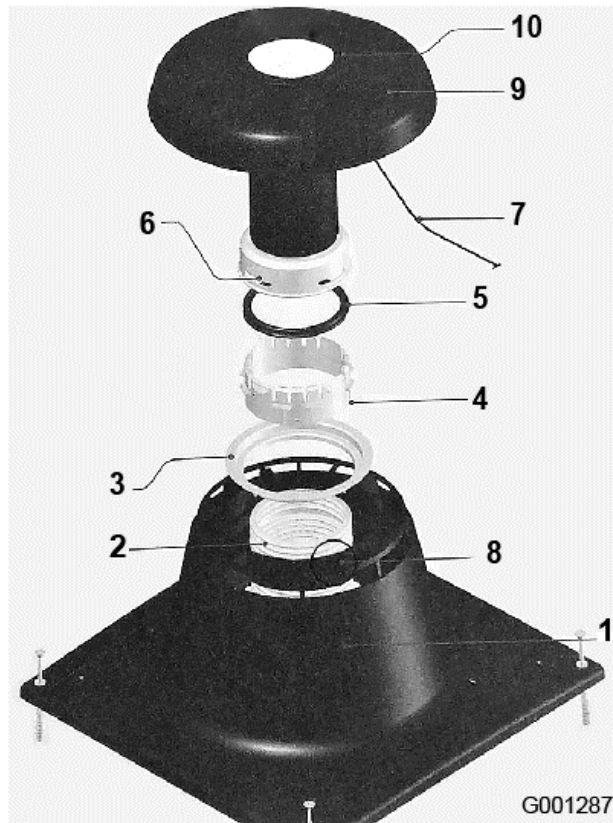
B. In a groove of the pipe, cut off the excess, to get the right length.



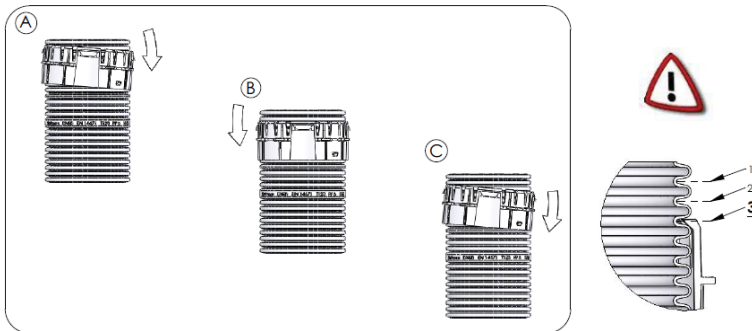
C. Deburr the cut edge.



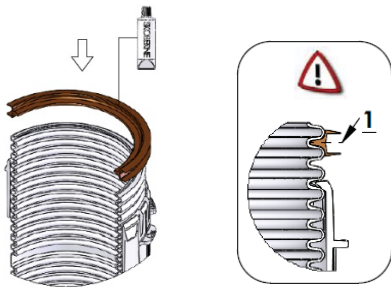
D. Install the chimney cover:



- a) Place the chimney cover base **1** on the chimney and over the flexible pipe **2**,
- b) Fasten the chimney cover base **1** of the chimney with screws,
- c) Insert the reduction ring **3**,
- d) Click the mounting ring **4** in the 3rd groove of the flexible pipe,

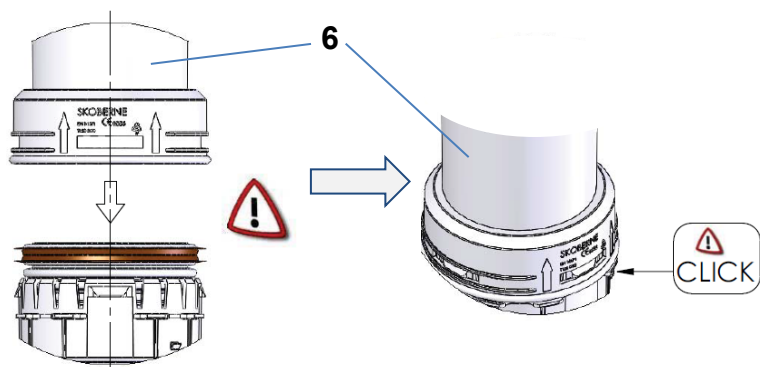


- e) Fit the gasket **5** in the first groove of the flexible pipe,



- f) Put some lubricant on the gasket **5**,

g) Clip the finishing tube **6** onto the mounting ring until it clicks into place



h) Connect the safety rope **7** to the chimney cover **8**.

i) Click the sealing ring **9** onto the cover **10**,

j) Put the cover **10** over the finishing tube **6**,

k) Plug the cover **10** firmly over the chimney cover base **1**.